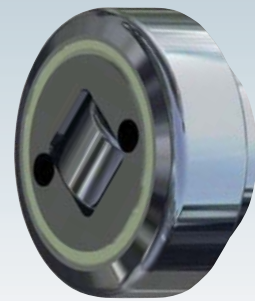
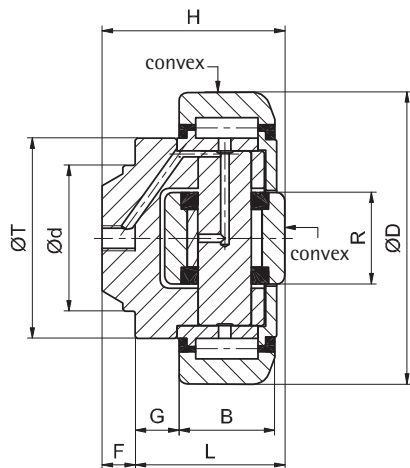


Lubricated for life, but optionally from size 60 suitable for relubrication



Combination, bearings, combined – fixed

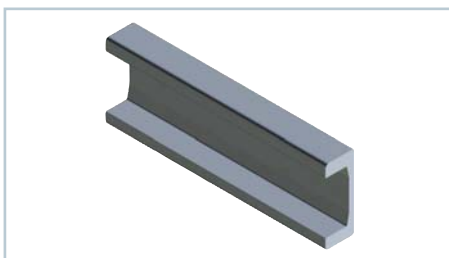


i Technical specifications bearing / profile, based on Hertzian pressure F_R and F_A . The contact faces of the combination bearings have a convex finish. Bearings with diameter <100 mm should be dismantled before welding is performed.

🛒 **Ordering example:**
ZTR 090.0200
Combination bearings, combined – fixed,
Ø 88.4 mm

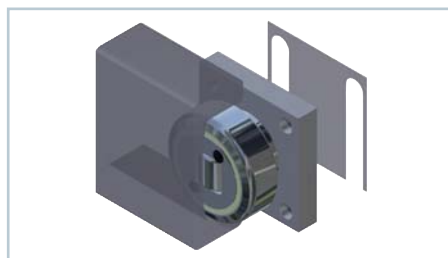
Part no.	D	d	H	B	G	L	F	T	R	F_R	F_A	dyn. load factor of radial bearings C	stat. load factor of radial bearings C_0	dyn. load factor of axial bearings C_a	stat. load factor of axial bearings C_{0a}	U-profiles
	mm	mm	mm	mm	mm	mm	mm	mm	mm	mm	mm	kN	kN	kN	kN	
ZTR 050.0200	52.5	30	33	17	5	27	6	40	16	5.3	2	24.5	32.5	7.5	7.5	ZUP 050.0726
ZTR 060.0200	62.5	30	37.5	20	9	30.5	7	42	20	8.87	2.95	31	35.5	11	11.5	ZUP 060.0700
ZTR 070.0200	70.1	35	44	23	10.5	36	8	48	22	11.4	3.15	45.5	51	13	14	ZUP 070.0700
ZTR 080.0200	77.7	40	48	23	10.5	36.5	11.5	54	24	12.87	5	48	56.8	18	18	ZUP 080.0700
ZTR 090.0200	88.4	45	57	30	10.5	44	13	59	26	20.37	5.1	68	72	23	23	ZUP 090.0700
ZTR 110.0200	107.7	60	69	31	20	55	14	71	34	24.06	8.9	81	95	31	36	ZUP 110.0700
ZTR 120.0200	123	60	72.3	37	14	56	16.3	80	40	33.44	9.8	110	132	43	50	ZUP 120.0700
ZTR 150.0200	149	60	78.5	45	8.5	58.5	20	103	50	51.94	17.4	151	192	68	71	ZUP 150.0700
ZTR 180.0200	180	100	95.7	57.3	12.5	76.3	19.4	124	60	76	23	207	243	73	83	ZUP 180.0700

Combinations



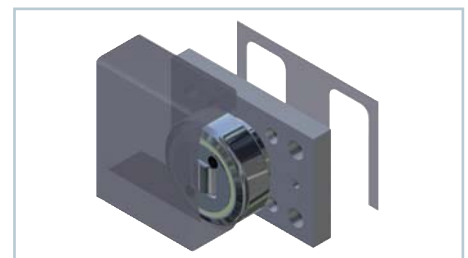
ZUP ---.0700

See page 131 for the appropriate guide profiles in Nb quality



ZBQ ---.1000

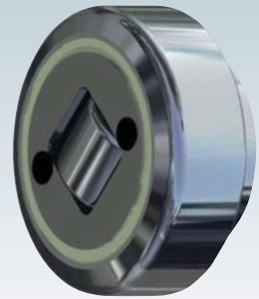
See page 134 for square attachment elements with welded-in combination bearings



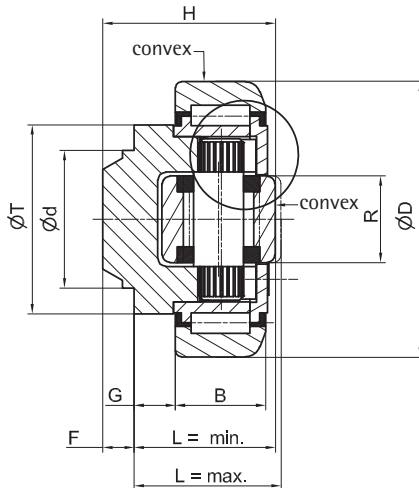
ZBR ---.1100

See page 135 for rectangular attachment elements with welded-in combination bearings

Sealed for life



Combination bearings, combined – adjustment with eccentric cam



i Technical specifications bearing / profile, based on Hertzian pressure F_R and F_A . The contact faces of the combination bearings have a convex finish. Bearings with diameter <100 mm should be dismantled before welding is performed.

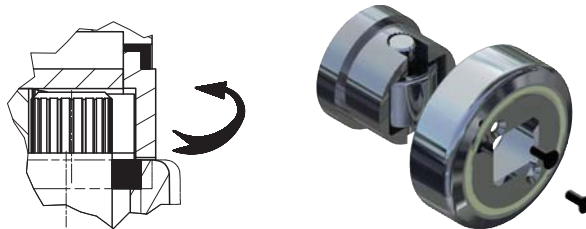
🛒 **Ordering example:**

ZTR 090.0350
Combination bearings, combined –
adjusted with eccentric cam, $\varnothing 88.4$ mm

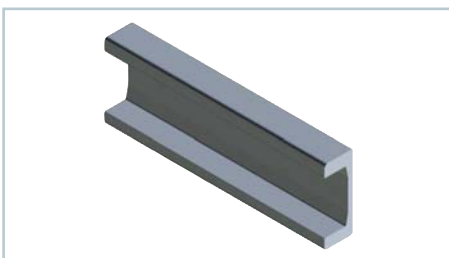
Part no.	D	d	B	G	L_{min}	L_{max}	F	T	R	F_R	F_A	dyn. load factor of radial bearings C	stat. load factor of radial bearings C_0	dyn. load factor of axial bearings C_a	stat. load factor of axial bearings C_{0a}	U-profiles
	mm	mm	mm	mm	mm	mm	mm	mm	mm	mm	mm	kN	kN	kN	kN	
ZTR 060.0350	62.5	30	20	9	30.5	32	7	42	20	8.87	2.95	31	35,5	11	11,5	ZUP 060.0700
ZTR 070.0350	70.1	35	23	10.5	36	37.5	8	48	22	11.4	3.15	45.5	51	13	14	ZUP 070.0700
ZTR 080.0350	77.7	40	23	10.5	36.5	38.5	11.5	54	26	12,87	5	48	56,8	18	18	ZUP 080.0700
ZTR 090.0350	88.4	45	30	10.5	44	46	13	59	26	20,37	5.1	68	72	23	23	ZUP 090.0700
ZTR 110.0350	107.7	60	31	20	55	57.5	14	71	34	24,06	8.9	81	95	31	36	ZUP 110.0700
ZTR 120.0350	123	60	37	14	56	59	16.3	80	40	33,44	9.8	110	132	43	50	ZUP 120.0700
ZTR 150.0350	149	60	45	10.5	58.5	62.5	20	103	50	51,94	17.4	151	192	68	71	ZUP 150.0700

Simple adjustment of axial bearings:

- Loosen the screws and pull off the outer ring
- Turn the eccentric cam axis
- Check dimension L and adjust it if necessary
- Bolt on the outer ring with its cover
- Lock the screws (Loctite)

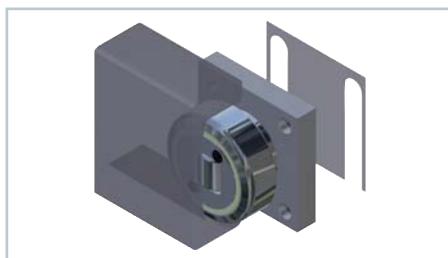


Combinations



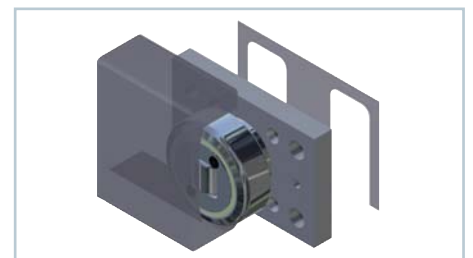
ZUP ---.0700

See page 131 for the appropriate guide profiles in Nb quality



ZBQ ---.1000

See page 134 for square attachment elements with welded-in combination bearings



ZBR ---.1100

See page 135 for rectangular attachment elements with welded-in combination bearings