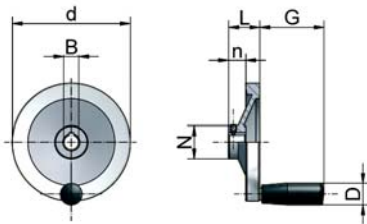


For the S and R version



Handwheel HR



| Part no. | d | N | b | n | L | G | D | B H7 | B H7 | kg |
|----------|-----|----|------|----|----|------|----|------|----------|------|
| HR-80 | 80 | 26 | 13.0 | 16 | 26 | 42.5 | 18 | 8 | 9/11 | 0.16 |
| HR-125 | 125 | 31 | 15.0 | 18 | 33 | 67.5 | 23 | 6 | 11/14 | 0.30 |
| HR-160 | 160 | 36 | 18.0 | 20 | 39 | 82.5 | 26 | 14 | 14/16/19 | 0.50 |
| HR-200 | 200 | 42 | 20.5 | 24 | 45 | 82.5 | 26 | 16 | 16/19/20 | 1.00 |
| HR-250 | 250 | 48 | 23.0 | 28 | 51 | 92.5 | 28 | 20 | 20/25 | 1.30 |

Material: Aluminium, plastic (handle)

Design: No more than max. 50 - 60 N force should be required at the handle



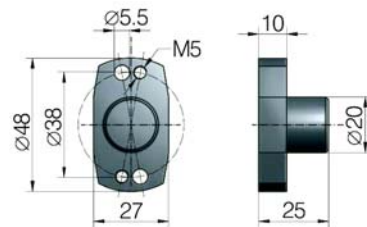
Ordering example:

Diameter
Bore
N = with keyway and set screw
V = only pilot hole

HR-125-11-N



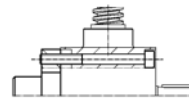
Protective cap GSZ-2-SK



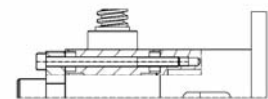
GSZ-2

incl. screws
Material: Hard anodised aluminium

| Part no. | D | d | E | F | Screws DIN 912 | kg |
|----------|----|--------|----|----|-------------------|------|
| GSZ-2-SK | 20 | 5.5/M5 | 25 | 10 | M5x55 | 0.05 |



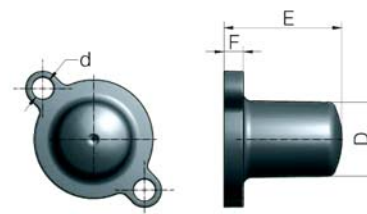
M5x55
Screws are included with the
protective cap



M5x70
Screws are included with the motor
flange / bevel gearbox



Protective cap Z-.- SK



Z-5 to Z-150

Z-250 to Z-1000

incl. screws
Material: Z-5 to Z-150: PA6 GF15,
up to 120°C, briefly 180°C
Material: Z-250 to Z-1000: POM,
up to 100°C, briefly 140°C

Suitable for screw jacks Z, GSZ, MSZ
(MSZ up to size 50) and
bevel gearboxes KSZ, KGZ

| Part no. | D | d | E | F | Screws DIN 912 | kg |
|--------------|-----|------|-----|----|-------------------|------|
| Z-5-SK | 25 | 7 | 32 | 8 | M6x16 | 0.02 |
| Z-10-SK | 30 | 9 | 32 | 8 | M8x16 | 0.04 |
| Z-25-SK | 31 | 9 | 49 | 8 | M8x16 | 0.05 |
| Z-35-SK | 35 | 11 | 54 | 8 | M10x20 | 0.07 |
| Z-50-SK | 35 | 11 | 55 | 8 | M10x20 | 0.08 |
| Z-100/150-SK | 46 | 13.5 | 74 | 8 | M12x25 | 0.12 |
| Z-250-SK | 60 | 17.5 | 82 | 25 | M16x30 | 0.70 |
| Z-350-SK | 75 | 20 | 85 | 30 | M18x30 | 0.90 |
| Z-500-SK | 90 | 22 | 125 | 35 | M20x40 | 1.20 |
| Z-750-SK | 110 | 22 | 122 | 28 | M20x40 | 1.50 |
| Z-1000-SK | 100 | 26 | 142 | 30 | M24x40 | 2.20 |