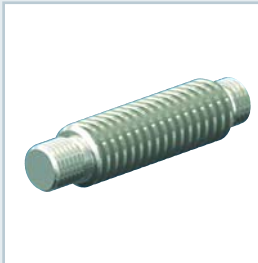
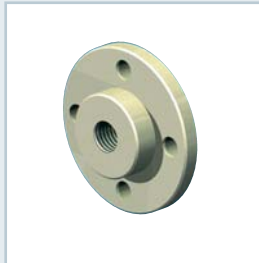


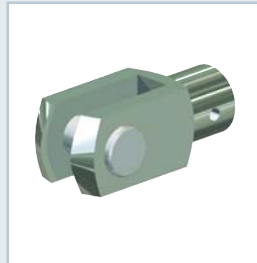
For the translating version S



Trapezoidal screws
S-Tr
Page 82



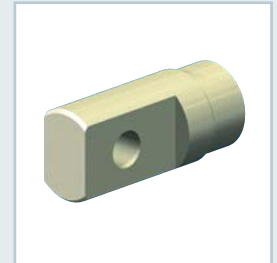
Fixing flange
BF
Page 82



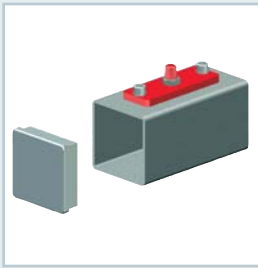
Forked end
GK
Page 82



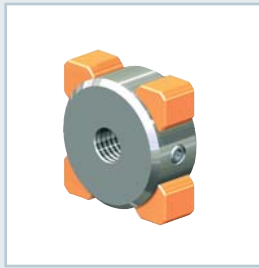
Rod end
KGK
Page 82



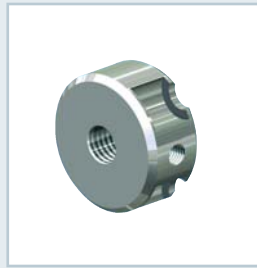
Pivot bearing end
SLK
Page 83



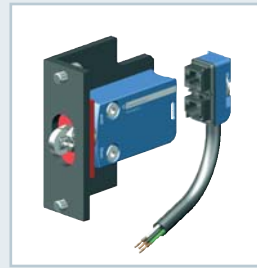
Protective tube
SRO
Page 83



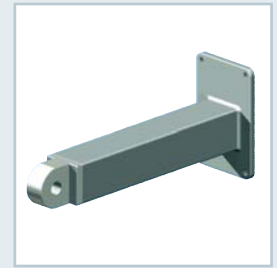
Rotation protection
VS
Page 83



Escape protection
AS
Page 83

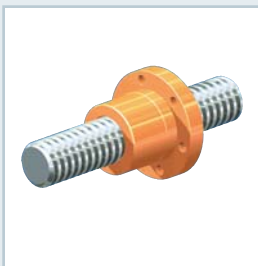
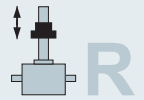


Limit switch set
ES
Page 84

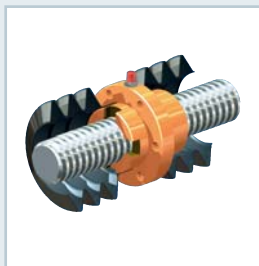


Pivoting support tube
STRO
Page 86

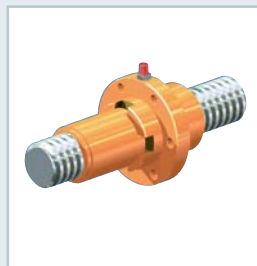
For the rotating version R



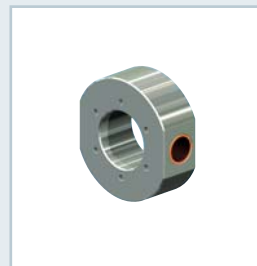
Flange nut
FM
Page 88



Duplex nut
DM
Page 89



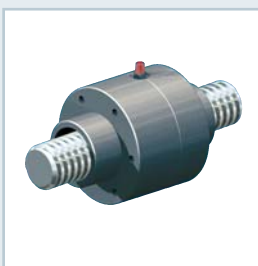
Safety nut
SIFA
Page 89



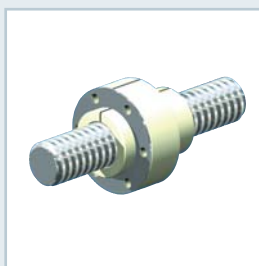
Cardan adapter
DMA for DM
Page 89



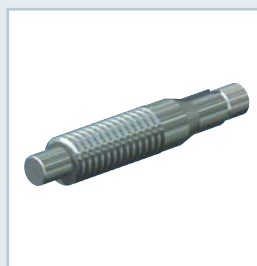
Driving flange
TRMFL for FM
Page 89



Self-aligning nut
PM
Page 90



Greaseless nut
FFDM
Page 90



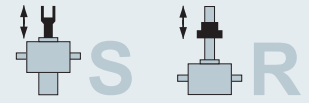
Trapezoidal screw
R-Tr
Page 91



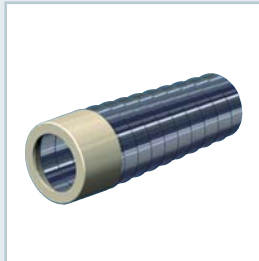
Opposed bearing plate
GLP
Page 91

NOTE:
the accessories are suitable for Z and GSZ screw jacks. See also the overview on pages 6 and 7.

For S and R versions



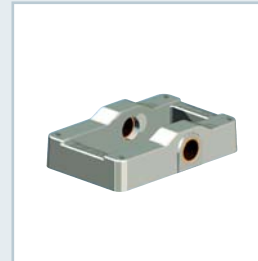
Bellows
FB
Page 92



Spiral spring
SF
Page 94



Pivot mounts
LB
Page 96



Pivot bearing plate
KAR
Page 96



Handwheel
HR
Page 98



Protective cap
SK
Page 98



for GSZ series

Fixing strips
BFL
Page 99

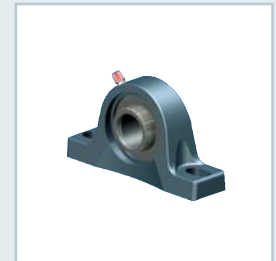


for GSZ series

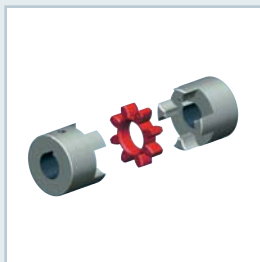
Pivot bearing plate
KAR
Page 99



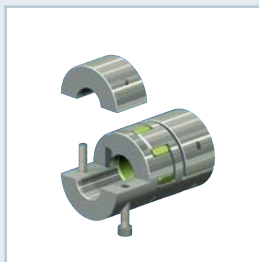
Connecting shaft
VWZ
Page 100



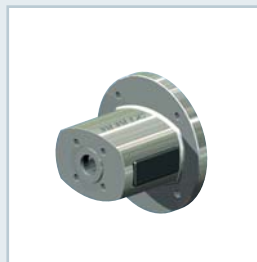
Pedestal bearing
STL
Page 103



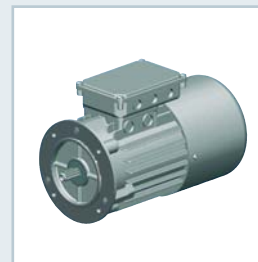
Standard coupling
KUZ
Page 104



Clamp coupling
KUZ-KK
Page 105



Motor flange
MF
Page 106



Three-phase AC motor
AC
Page 110



DC motor
DC
Page 111



Rotary pulse encoder
DIG
Page 116



Spring pressure brake
FDB
Page 118



Lubricants
Page 120



Lubricator
Z-LUB
Page 120



We have patents registered or pending for a range of functions and components.